

EAGLE SERIES

OIL FREE ROTARY SCREW COMPRESSORS



GENERAL FEATURES



% 100 OIL FREE

HERTZ Eagle Series 2 Stage Dry Screw oil-free compressors maintain 100 % oil-free air for industries which require clean and oil-free compressed air.



TECHNOLOGY

Special coated rotors “No Teflon wear”, reliable airend design with timing gears, special bearings and seals. “No maintenance for diaphragm and balancing pistons”, Efficient special air cooling design, Simple and easy to maintenance machine lay-out, Latest technology PLC controllers with remote communication and start/stop capability.



PLC CONTROLLER

- Multi-operation function up to 5 compressors without requiring an external main controller
- Thanks to the automatic motor bearing lubrication system, the motor is never lubricated too much, too little or too late.
- Weekly scheduler with the ability to start and stop the machine at 3 different time periods, which can be set individually for each day of the week.
- Ability to do both pressure and temperature PID at the same time thanks to the Dual PID feature.
- With the pressure PID, it provides energy efficiency by keeping the pressure constant at the desired value.
- All inverter and compressor control data are managed from a single point in models with an inverter.
- Internal ModBus communication



STANDARD FEATURES

- Sound insulated canopy
- Electrostatic powder coated components for high corrosion resistance
- Electric motor protection for preventing over loading
- F Class 50 Hz IE4 motors
- Two stage air-end
- Air or water cooled system alternatives
- Pre-cooling system for Air cooled machines, entirely stainless steel exchanger parts for water cooled machines.
- Variable speed drive or fixed speed drive alternatives

OTHER OPTIONS

- Automatic greasing system
- Heat Recovery System





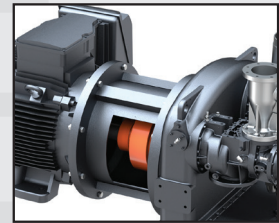
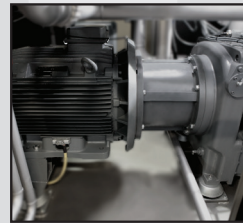
EAGLE SERIES

Oil Free Rotary Screw Compressors



Completely oil-free compressed air according to ISO 8573-1 Class- ZERO. Compressors tested and approved by TUV Rheinland Germany.

- High performance compliant with ISO 1217, Annex C/E
- Direct-Drive driving system with efficient IE4 class electric motor and flexible coupling
- Proven reliability
- Easy to service, durable, powerful hydraulic actuated suction loader
- Water separator for both of stages
- Minimized level of maintenance and running costs by trouble free production cycle



STANDARD FEATURES

- Sound insulated canopy
- Electrostatic powder coated components for high corrosion resistance
- Electric motor protection for preventing over loading
- F Class TEFC IE4 motors
- Two stage air-end
- Air or water cooled system alternatives
- Pre-cooling system for air cooled machines, entirely stainless steel parts (heat exchanger, piping water separator etc.).
- Variable speed drive or fixed speed drive alternatives

OTHER OPTIONS

- Automatic greasing system
- Heat Recovery System



AIR END

■ Totally oil free air

Very reliable and field proved sealing arrangement ensures separation oil free area from the oil needed for lubrication of gears and bearings

■ Robust design reliable in operation under the most difficult condition

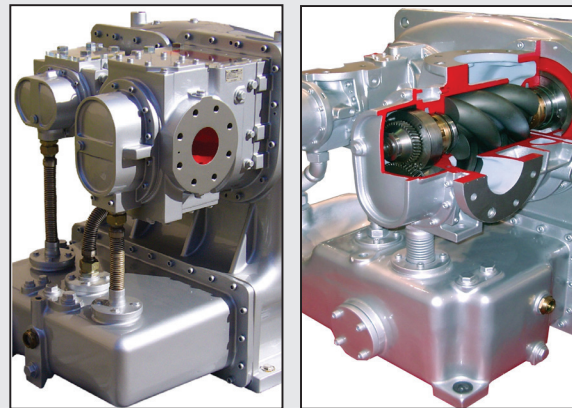
Working in dusty, wet, cold and hot environment possible

■ Bearing arrangement guarantees long life without vibrations

The radial forces are compensated by cylindrical roller bearings, the axial forces are compensated by four-point bearings arranged on the discharge side.

■ High engineered gear driven Design

The gear box is equipped with helical bullgear running in an anti-friction bearing. Rotors are dynamically balanced ensuring excellent running properties of the screw air ends



■ Special coating for long term high efficiency

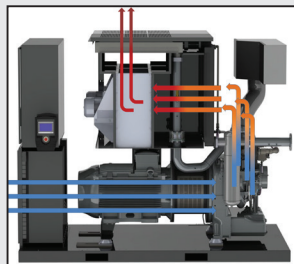
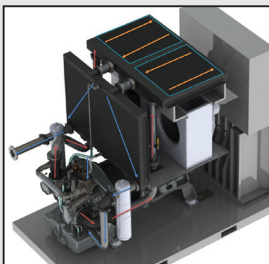
Excellent coating of rotors and inner part of housing allows reduction of clearances to levels minimum and increases efficiency.

■ Stainless steel rotors in the HP-stage

Elimination damage through corrosion and rusting after longer shutdown times.

COOLING

- Two stage cooling system with pre-cooler
- Stainless steel fin & tube pre-cooler
- Aluminum bar & plate after cooler
- Efficient design concept
- Easy to maintenance & cleaning
- Washable panel filter



TECHNICAL DATA

Model	Pressure		Capacity*		Motor Power kW/HP	Connection Size	Dimensions (in.) Air Cooled / Water cooled			Weight lbs	Noise** dB(A)
	bar	psi	m³/min	cfm			Length	Width	Height		
EAGLE 37	7	100	6,2	219	37/50	2" NPT	96	63	85	5004/5036	77
	8,5	125	5,2	184							
	10	145	4,7	166							
EAGLE 45	7	100	7,6	268	45/60	2" NPT	96	63	85	5401/5422	77
	8,5	125	6,7	237							
	10	145	6,1	215							
EAGLE 55	7	100	9,5	336	55/75	2" NPT	96	63	85	5732/5752	78
	8,5	125	8,2	290							
	10	145	7,5	265							
EAGLE 75	7	100	12,7	449	75/100	2" NPT	96	63	85	6305/6281	78
	8,5	125	11,7	413							
	10	145	10,7	378							
EAGLE 90	7	100	14,5	513	90/125	2" NPT	96	63	85	6503/6480	79
	8,5	125	14,4	509							
	10	145	12,7	449							
EAGLE 110	7	100	19,1	673	110/150	3" FLANGE ANSI B16.5	121	72	96/87	8267/8816	83
	8,5	125	16,2	571							
	10	145	16,2	572							
EAGLE 132	7	100	22,9	809	132/180	3" FLANGE ANSI B16.5	121	72	96/87	8598/9147	85
	8,5	125	21,7	766							
	10	145	19,1	674							
EAGLE 160	7	100	27,0	954	160/220	3" FLANGE ANSI B16.5	121	72	96/87	9149/9698	86
	8,5	125	25,4	898							
	10	145	23,7	838							
EAGLE 185	7	100	29,0	1024	185/250	3" FLANGE ANSI B16.5	121	72	96/87	9149/9698	86
	8,5	125	28,9	1022							
	10	145	26,8	947							
EAGLE 200	7	100	34,6	1223	200/270	4" FLANGE ANSI B16.5	145/136	84	107/96	13007/13444	87
	8,5	125	34,5	1220							
	10	145	29,0	1023							
EAGLE 250	7	100	43,9	1549	250/340	4" FLANGE ANSI B16.5	145/136	84	107/96	13447/13995	88
	8,5	125	41,0	1449							
	10	145	38,2	1351							
EAGLE 315	7	100	48,6	1715	315/430	4" FLANGE ANSI B16.5	145/136	84	107/96	13888/14326	89
	8,5	125	48,5	1714							
	10	145	43,7	1545							

- HERTZ KOMPRESSOREN reserves its rights to make changes in its products and specifications without prior notice.

* Unit performances measured in reference conditions ISO 1217:2009, Annex C standard which are 1 bar /14.5 psig absolute air Pressure, %0 relative humidity, 20°C /68 °F inlet air temperature.

** Refers to sound Pressure level measured according to ISO 2151:2008 and ISO 3744:2010 with ± 3 dB(A) tolerance.

TECHNICAL DATA

Model	Pressure		Capacity*				Motor Power	Connection Size	Dimensions (in.) Air Cooled / Water cooled			Weight	Noise**
			m ³ /min		cfm				Length	Width	Height		
	bar	psi	min	max	min	max	kW/HP	lbs				dB(A)	
EAGLE 55 VSD	7	100	3,4	9,1	120	321	55/75	2" NPT	96	63	85	5896/5918	77
	8,5	125	3,4	8,3	120	293							
	10	145	3,4	7,0	120	247							
EAGLE 75 VSD	7	100	3,4	12,1	120	427	75/100	2" NPT	96	63	85	6469/6447	77
	8,5	125	3,4	11,3	120	399							
	10	145	3,4	10,6	120	374							
EAGLE 90 VSD	7	100	3,4	14,5	120	512	90/125	2" NPT	96	63	85	6667/6645	78
	8,5	125	3,4	13,6	120	480							
	10	145	3,4	13,2	120	466							
EAGLE 110 VSD	7	100	9,7	19,7	343	695	110/150	3" FLANGE ANSI B16.5	121	72	96/87	9036/9587	82
	8,5	125	9,6	18,2	339	644							
	10	145	9,6	17,0	339	599							
EAGLE 132 VSD	7	100	10,4	22,2	367	784	132/180	3" FLANGE ANSI B16.5	121	72	96/87	9257/9698	84
	8,5	125	10,3	21,0	364	743							
	10	145	10,3	19,6	364	691							
EAGLE 160 VSD	7	100	10,0	26,9	353	950	160/220	3" FLANGE ANSI B16.5	121	72	96/87	8816/9257	85
	8,5	125	9,8	25,5	346	901							
	10	145	9,8	23,5	346	829							
EAGLE 185 VSD	7	100	10,3	29,6	364	1044	185/250	3" FLANGE ANSI B16.5	121	72	96/87	10138/10689	85
	8,5	125	10,2	28,1	360	992							
	10	145	10,1	26,4	357	931							
EAGLE 200 VSD	7	100	17,2	35,1	608	1241	200/270	4" FLANGE ANSI B16.5	145/136	84	107/96	13885/14436	86
	8,5	125	17,1	31,4	604	1108							
	10	145	17,0	28,5	600	1007							
EAGLE 250 VSD	7	100	17,3	44,6	611	1575	250/340	4" FLANGE ANSI B16.5	145/136	84	107/96	14657/14767	87
	8,5	125	17,2	41,2	608	1454							
	10	145	17,0	37,7	600	1330							
EAGLE 315 VSD	7	100	17,5	48,8	618	1723	315/430	4" FLANGE ANSI B16.5	145/136	84	107/96	14657/15208	88
	8,5	125	17,4	46,6	615	1647							
	10	145	17,3	44,9	611	1586							

- HERTZ KOMPRESSOREN reserves its rights to make changes in its products and specifications without prior notice.

* Unit performances measured in reference conditions ISO 1217:2009, Annex E standard which are 1 bar /14.5 psig absolute air Pressure, %0 relative humidity, 20°C /68 °F inlet air temperature.

** Refers to sound Pressure level measured according to ISO 2151:2008 and ISO 3744:2010 with ± 3 dB(A) tolerance.



HERTZ KOMPRESSOREN GLOBAL
export@hertz-kompressoren.com
www.hertz-kompressoren.com

HERTZ KOMPRESSOREN GmbH
Kronacherstr. 60, 96052 Bamberg
T: +49 951 96 43 1388 F: +49 951 96 43 1350
info@hertz-kompressoren.de

HERTZ KOMPRESSOREN USA Inc.
3320 Service St. Charlotte, NC 28206 USA
T: +1-704-579-5900 F : +1-704-579-5997
info@hertz-kompressoren.us